



## Reversible Heart Square (Intarsia Crochet)

with YouTube Help Video

by Donna Wolfe from

NAZTAZIA®  
NAZTAZIA.COM

This is a nice, simple, 12-inch block made of all single crochet stitches that forms a reversible heart square for blankets. It's a good way to practice following a graph or chart. Check out the how-to video on the Naztazia YouTube channel here:

<https://youtube.com/nasztazia> And feel free to Pin photos or check out other info at:  
<https://nasztazia.com>

### Terminology:

CH = Chain

SC = Single Crochet

### Size/Gauge:

Size: 12" square. Gauge: 12 STs and 13 ROWs = 4" SQ

### Materials:

170 yards of worsted weight yarn. Sample used Red Heart Chic Sheep by Marly Bird in Linen (50 yards), Suede (60 yards), and VIP (60 yards). Crochet hook Size I (5.5 mm). Scissors. Yarn needle.

### Instructions:

Watch the YouTube tutorial video here: <https://youtube.com/nasztazia> Look for "Reversible Heart Square."

#### Divide the yarn into rolls:

Linen (off-white) – 50 yards – divide into 2 rolls, each 25 yards.

Suede (dark beige) – 60 yards – divide into 3 rolls, each 20 yards.

VIP (dark blue) – 60 yards – divide into 3 rolls, each 20 yards.

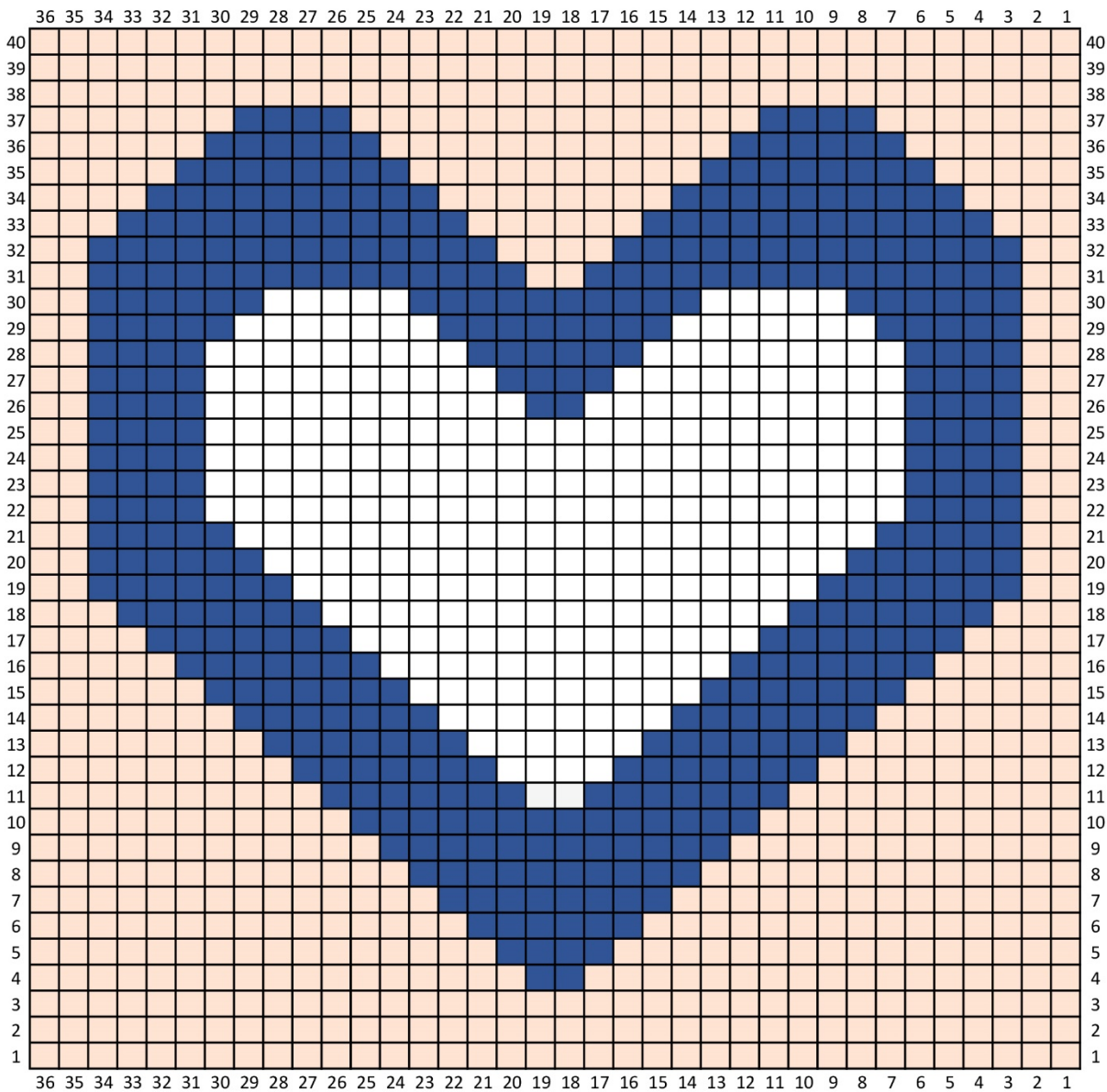
With Suede, CH 37.

ROW 1: SC in 2<sup>nd</sup> CH from hook and in each ST across. CH 1, turn.

ROW 2: Continuing with Suede, SC in each ST across. CH 1, turn.

Measure work. If using this square for the Wedding Blanket crochet a long, ensure the width of the square is 11.5 inches at this point. The border and blocking will add an additional .5 inches to make the 12" square.

ROWS 3-40: Follow chart below, changing colors using the intarsia method. Once a roll is no longer needed, cut yarn and reuse it for another section of the chart.



Border: 1 SC in each stitch around, placing 3 SCs in each corner. Fasten off, weave in ends.